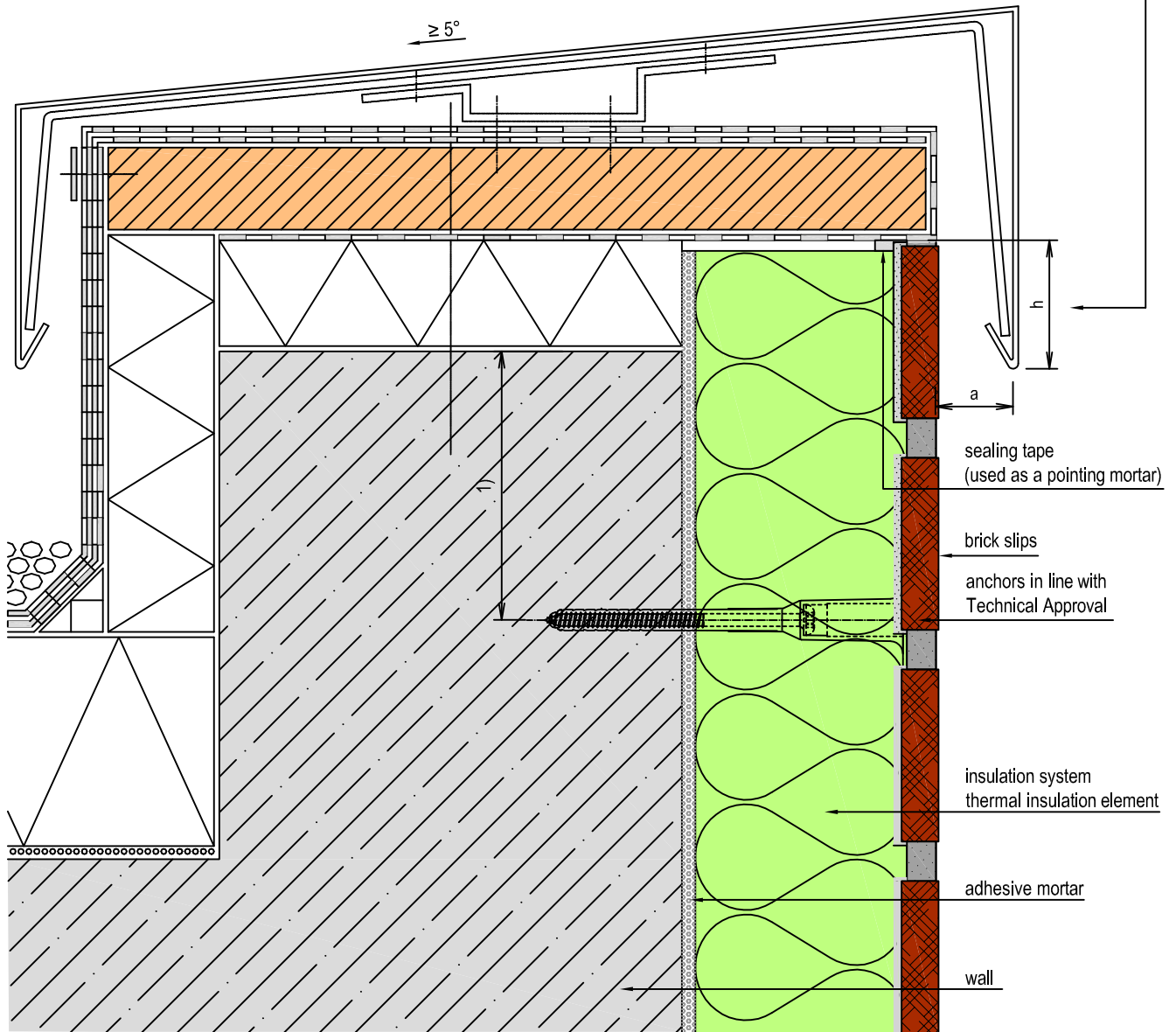



According to guidelines:
 - Rules according to craft roofing

building height (m)	a* (mm)	h (mm)
< 8	20	50
8 - 20	30	80
> 20	40	100

* min. Distance 50mm by copper (finish)



1) C_{min} anchors in line with Technical Approval

System: Klipla Insulation System with brick slips	Drawing number: 05-01	
Detail: Attic finish › Standard	Scale: ca. 1 : 2,5	